

Pump and Motor Mounting Bracket Kits

Also refer to "Pump Features, Selection and Operating Recommendations" ([dynexpumpoperating.pdf](#))

CONTACT INFORMATION

USA Headquarters

Dynex/Rivett Inc.
770 Capitol Drive
Pewaukee, WI 53072 U.S.A.
Tel: 262-691-2222
FAX: 262-691-0312
E-mail: sales@dynexhydraulics.com

Power Units & Systems

Dynex/Rivett Inc.
54 Nickerson Road
Ashland, MA 01721 U.S.A.
Tel: 508-881-5110
FAX: 508-881-6849
E-mail: ashland@dynexhydraulics.com

European Sales

Dynex/Rivett Inc.
Unit C5 Steel Close, Little End Road, Eaton Socon,
Huntingdon, Cambs. PE19 8TT United Kingdom
Tel: +44 (0) 1480 213980
FAX: +44 (0) 1480 405662
E-mail: sales@dynexhydraulics.co.uk

**For more information
visit our web site:
www.dynexhydraulics.com**

BROCHURE NOTES:

Maximum pressures indicated throughout are the maximum intermittent pressures a component can sustain for occasional, short periods of operation without appreciably reducing the life expectancy. Contact the Dynex sales department for a review of any application which requires operating above the rated pressures, flows, speeds or higher than normal operating temperatures.

Specifications shown were in effect when published. Since errors or omissions are possible, contact your sales representative for the most current specifications before ordering. Dynex reserves the right to discontinue products or change designs at any time without incurring any obligation.



BRACKET KITS

Pump and Motor Mounting Bracket Kits

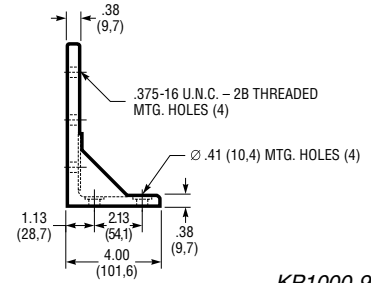
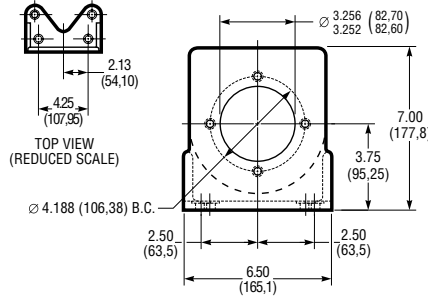
Mounting brackets are available in kits, which include mounting bolts and lock washers. Bolts can also be ordered separately.

The table below also lists RPA mounting bracket kits for converting PV4000 and PV6000 Series check-ball pumps for electro-hydraulic control.

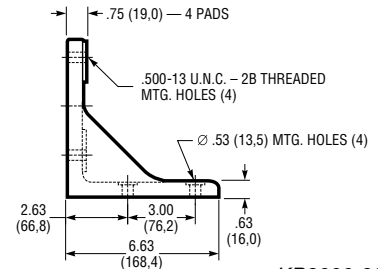
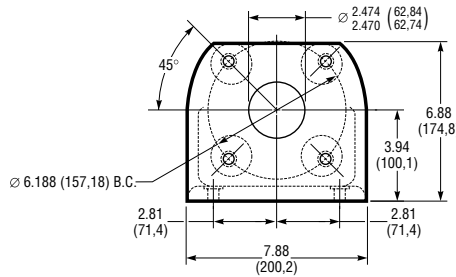
KIT SELECTION TABLE

Pump/Motor Series	Kit Number (Mounting)	Weight
PF1000	KP1000-9060 (S.A.E. A 2-Bolt)	6 lb (2,7 kg)
PF2006 PF2008	KP2000-9060 (Modified)	16 lb (7,3 kg)
PF2000 PV2024 MV2000	KP2012-9060 (S.A.E. B 2-Bolt)	16 lb (7,3 kg)
PF3000 MF2000	KP3021-9060 (S.A.E. C 4-Bolt)	16 lb (7,3 kg)
PF4000 PV4000	KP4000-9060 (S.A.E. D 4-Bolt)	29 lb (13,2 kg)
PV4000	KP4020-9047 ^① (RPA Bracket for Compensated Pump)	7 lb (3,2 kg)
PV4000	KP4026-9047 ^① (RPA Bracket for Non-compensated Pump)	6 lb (2,7 kg)
PV6000	KP6046-9047 ^① (RPA Bracket for Compensated Pump)	8 lb (3,6 kg)

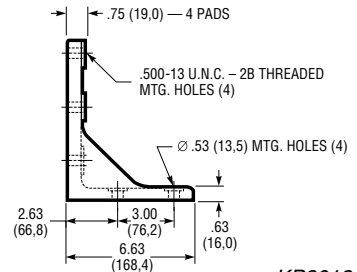
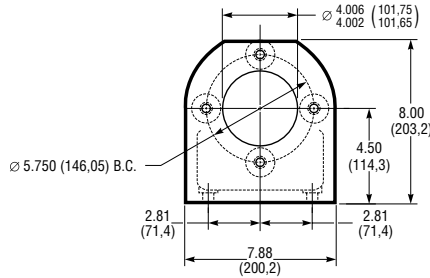
① For installation information, refer to Bulletin: *dynexpesvpspecs.pdf*. RPA must be ordered separately.



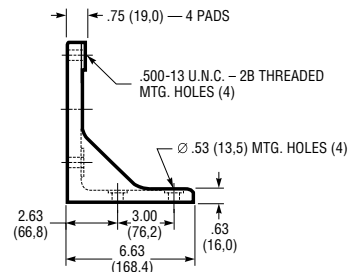
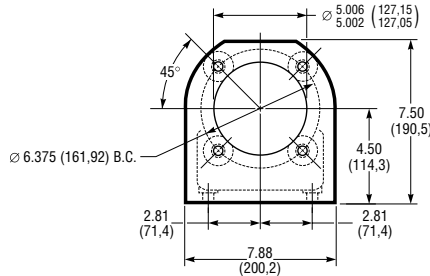
KP1000-9060



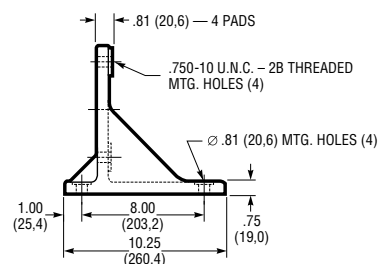
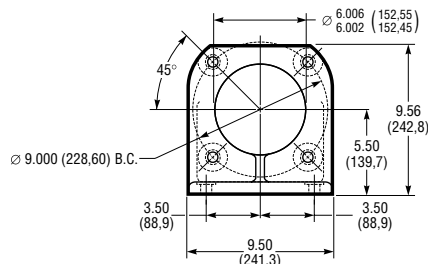
KP2000-9060



KP2012-9060



KP3021-9060



KP4000-9060